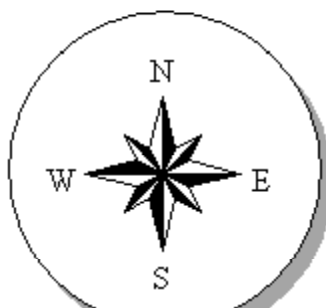


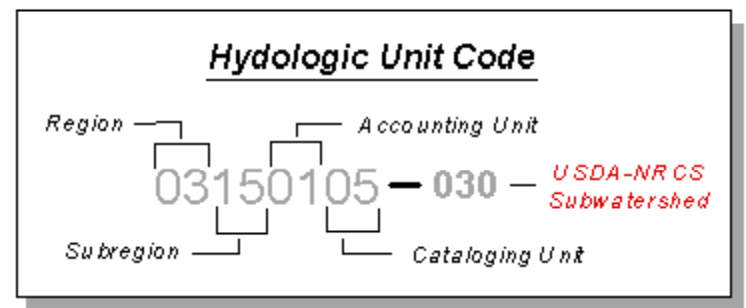
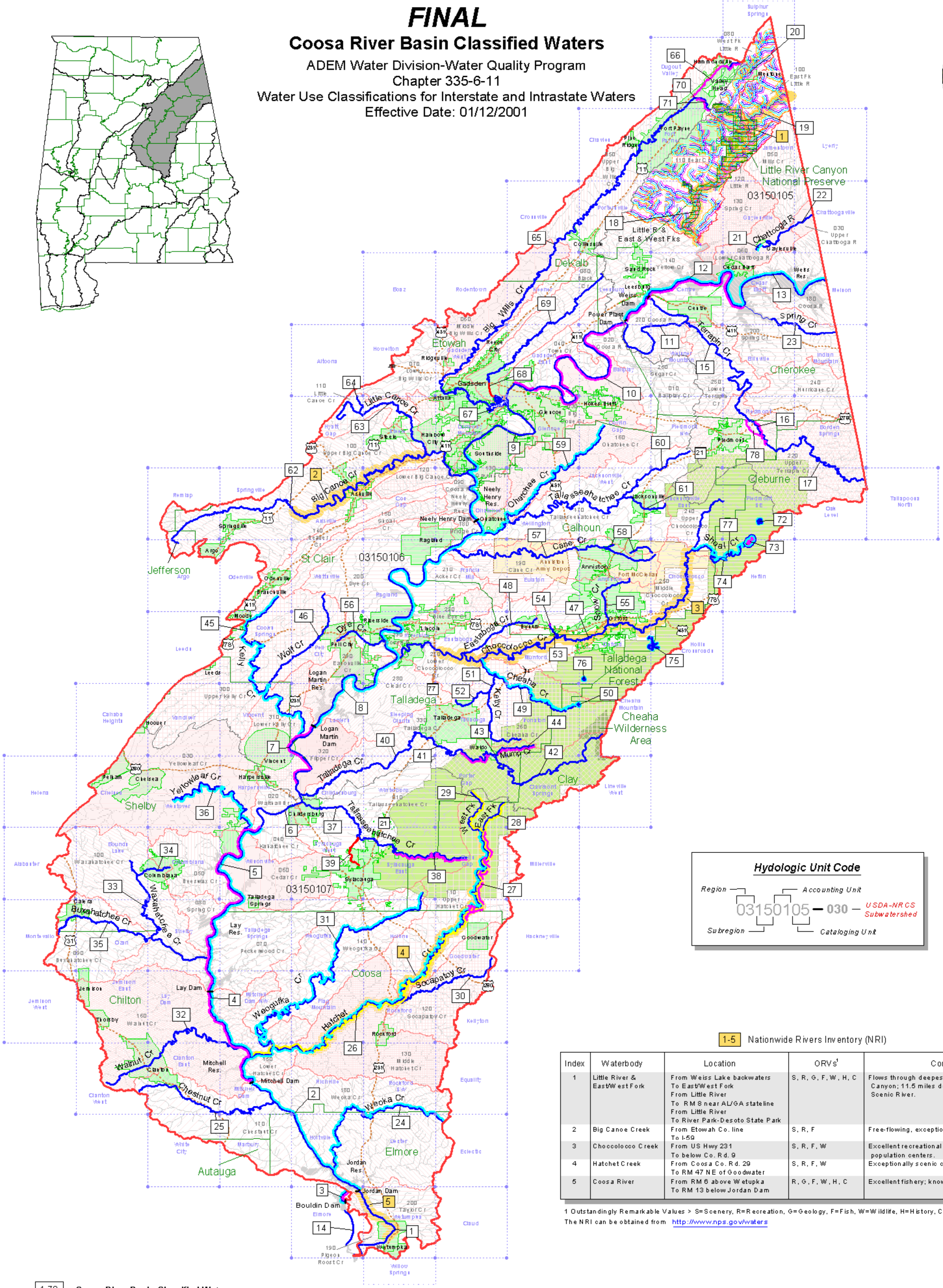
FINAL

Coosa River Basin Classified Waters

ADEM Water Division-Water Quality Program
Chapter 335-6-11
Water Use Classifications for Interstate and Intrastate Waters
Effective Date: 01/12/2001



USGS Catalog No.	Quad Name	ADEM Map No.
33086-B7	Alabaster	140NE
34086-A3	Altoona	109SE
33086-F7	Annisson	171NE
33086-F5	Arigo	174NE
33086-03	Ashville	168SE
34086-A7	Baldpate	196SE
34086-B2	Boaz	197NW
33086-H4	Borden Springs	182NW
33086-B6	Bourbon Lake	148NW
33086-B1	Bulls Gap	50SW
33086-06	Cahaba Heights	235SW
34086-05	Cedar Bluff	211NW
34086-06	Centre	136NE
34086-C4	Chattanooga	208SW
34086-07	Chavies	208NE
33086-D7	Cheaha Mountain	158NE
33086-C6	Chelsea	161SW
33086-C3	Childersburg	160SE
33086-F8	Choccolocco	170NW
33086-C8	Clairmont Springs	159SW
32086-05	Clanton East	134SE
32086-06	Clanton West	134SW
32086-E1	Claud	148SE
33086-05	Columbiana	148NE
33086-H7	Colvin Gap	184NE
33086-E4	Cooks Springs	173SW
33086-02	Cook's Gap	186SW
33086-F3	Crossville	208SW
32086-F2	Dexter	118NW
34086-E6	Dugout Valley	218SW
33086-H1	Dunaway Mountain	185NE
33086-E1	Eastaboga	172SE
33086-F1	Etowah	188SW
34086-A5	Etowah	195SE
32086-E3	Elmore	119SE
32086-01	Equality	132SE
33086-F8	Evadon	171NW
32086-H3	Flag Mountain	132NE
34086-D6	Fort Payne	207NW
33086-F1	Francis Mill	172NE
34086-A8	Gadsden East	198SW
34086-A1	Gadsden West	197SE
33086-C5	Gaylesville	207SE
33086-H8	Glencoe	184NW
33086-A1	Goodwater	148SE
33086-A8	Hackneyville	145SW
33086-C4	Harpersville	160SW
33086-F5	Heflin	170NE
33086-C7	Helena	162SE
33086-A2	Hollis	148SW
33086-E6	Holly Crossroads	170SW
32086-F3	Holtville	119NE
34086-A2	Howerton	171SW
33086-H3	Hyatt Gap	189NE
34086-A4	Indian Mountain	194SW
33086-D8	Ironaton	165NW
33086-06	Jacksonville East	183SW
33086-07	Jacksonville West	184SE
34086-D5	Jamestown	207NE
32086-H6	Jemison East	134NW
32086-H7	Jemison West	134NW
34086-08	Keener	168NW
32086-H1	Kellyton	132NE
33086-D3	Lanier	160NE
32086-H5	Lay Dam	134NE
33086-E5	Leeds	174SE
34086-07	Leesburg	168NE
33086-C7	Lineville West	159SE
34086-C6	Little River	207SW
34086-D4	Lyerly	208NW
32086-F4	Madison	119NW
34086-04	Madison	190SE
33086-B8	Madisonville	148NW
32086-G4	Mitchell Dam	133SW
32086-H4	Mitchell Dam NW	133NW
33086-A7	Montevallo	148SE
33086-E8	Montevallo	171SW
33086-G4	Oak Level	182SW
33086-F4	Odenville	173NW
33086-01	Onathee	195SE
33086-E7	Oxford	171SE
33086-A6	Ozark	148SW
33086-E3	Pell City	173SE
33086-H6	Piedmont	183NE
33086-H6	Piedmont NW	183NW
33086-05	Piedmont SE	183SE
33086-C1	Porter Gap	159SE
34086-C7	Portersville	208SE
33086-F2	Ragland	172NW
33086-05	Remlap	187SE
32086-03	Ridgely	133SE
33086-E2	Riverside	172SW
32086-H2	Rockford	132NW
32086-02	Rockford SW	132NW
34086-B1	Rodenowen	197NE
33086-04	Shelby	148SW
33086-D2	Sleeping Giants	150NW
33086-G4	Springville	188SW
33086-H2	Steele	188NW
34086-F5	Sulphur Springs	218NE
33086-B2	Sylacauga East	147NE
33086-B3	Sylacauga West	147NE
33086-D1	Talladega	160NE
33086-A4	Talladega Springs	147SW
33086-03	Tallapoosa North	182SW
34086-E5	Valley Head	218SE
33086-05	Vandiver	161NE
33086-D4	Vincent	160NW
33086-F3	Wattsville	173NE
34086-A8	Weinert Mountain	195SW
33086-G6	Wilmington	184SW
33086-A3	Weogufka	147SE
33086-C5	Westover	161SE
32086-E2	Wetumpka	118SW
32086-05	White City	120NE
32086-D2	Willow Springs	103NW
33086-B4	Wilsonville	147NW
33086-C2	Winterboro	159SW



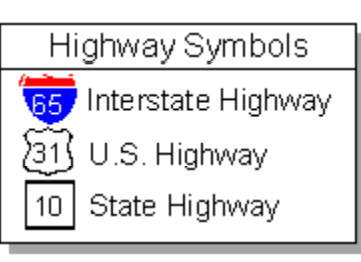
1-5 Nationwide Rivers Inventory (NRI)

Index	Waterbody	Location	ORV's	Comments
1	Little River & East/West Fork	From Weiss Lake backwaters To East/West Fork From Little River To RM 6 near AL/GA state line From Little River To River Park-Desoto State Park	S, R, G, F, W, H, C	Flows through deepest gorge East of the Grand Canyon; 11.5 miles designated State Wild and Scenic River.
2	Big Canoe Creek	From Etowah Co. line To L-59	S, R, F	Free-flowing, exceptionally scenic stream segment.
3	Choccolocco Creek	From US Hwy 231 To below Co. Rd. 29	S, R, F, W	Excellent recreational potential in proximity to population centers.
4	Hatchet Creek	From Coosa Co. Rd. 29 To RM 47 NE of Goodwater	S, R, F, W	Exceptionally scenic canoeing stream.
5	Coosa River	From RM 6 above Wetupka To RM 13 below Jordan Dam	R, G, F, W, H, C	Excellent fishery; known archaeological sites.

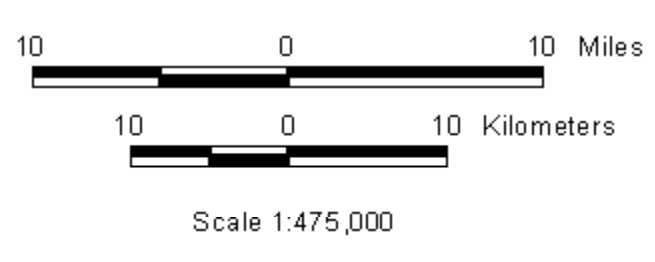
1 Outstandingly Remarkable Values > S=Scenery, R=Recreation, G=Geology, F=Fish, W=Wildlife, H=History, C=Cultural
The NRI can be obtained from <http://www.nps.gov/waters>

1-78 Coosa River Basin Classified Waters

Index	Stream	From	To	Classification
1	COOSA RIVER (Lake Jordan)	Its junction with the TALLAPOOSA RIVER	Jordan Dam	F, G, W
2	COOSA RIVER (Lake Jordan)	Jordan Dam	Mitchell Dam	F, G, W
3*	COOSA RIVER (Lake Jordan)	Bouldin Dam	Alabama Highway 111	P, W, S, F, G, W
4	COOSA RIVER (Lake Mitchell)	Mitchell Dam	Lay Dam	P, W, S, F, G, W
5	COOSA RIVER (Lay Lake)	Lay Dam	Southern RR Bridge (1-1/2 miles above Yellowleaf Creek)	P, W, S, F, G, W
6	COOSA RIVER (Lay Lake)	River Mile 99 (1-1/2 miles above Yellowleaf Creek)	River Mile 99 (1-1/2 miles above Talladega Creek)	F, G, W
7	COOSA RIVER (Lay Lake)	Logan Martin Dam	McCordney's Ferry (3 miles upstream of Big Canoe Creek)	P, W, S, F, G, W
8	COOSA RIVER (Logan Martin L.) (L. N. Henry)	Logan Martin Dam	McCordney's Ferry (3 miles upstream of Big Canoe Creek)	S, F, G, W
9	COOSA RIVER (Lake Neely Henry)	McCordney's Ferry (3 miles upstream of Big Canoe Creek)	City of Gadsden's water supply intake	F, G, W
10	COOSA RIVER (Lake Neely Henry)	City of Gadsden's water supply intake	Weiss Dam powerhouse	P, W, S, F, G, W
11	COOSA RIVER (Weiss Lake)	Weiss Dam powerhouse	Weiss Dam	F, G, W
12	COOSA RIVER (Weiss Lake)	Weiss Dam	Spring Creek	P, W, S, F, G, W
13	COOSA RIVER (Weiss Lake)	Spring Creek	Alabama-Georgia state line	S, F, G, W
14*	COOSA RIVER (Callaway Creek)	Bouldin Dam	COOSA RIVER	F, G, W
15	Terrapin Creek	COOSA RIVER	U. S. Highway 278	F, G, W
16	Terrapin Creek	U. S. Highway 278	Calhoun County Road 70, east of Vigo	F, G, W
17	Terrapin Creek	Calhoun County Road 70, east of Vigo	Alabama-Georgia state line	F, G, W
18	Little River and tributaries	COOSA RIVER (Weiss Lake)	Junction of E. Fk of Little R. and W. Fk of Little R.	P, W, S, F, G, W
19	East Fork of Little River and tributaries	Little River	Alabama-Georgia state line	P, W, S, F, G, W
20	West Fork of Little River and tributaries	Little River	Alabama-Georgia state line	P, W, S, F, G, W
21	Chattanooga River	COOSA RIVER (Weiss Lake)	Gaylesville	F, G, W
22	Chattanooga River	COOSA RIVER (Weiss Lake)	Alabama-Georgia state line	F, G, W
23	Spring Creek	COOSA RIVER (Weiss Lake)	Alabama-Georgia state line	F, G, W
24	Weoka Creek	COOSA RIVER (Lake Jordan)	Its source	S, F, G, W
25	Chestnut Creek	COOSA RIVER (Lake Jordan)	Its source	F, G, W
26	Hatchet Creek	COOSA RIVER (Lake Mitchell)	Weiss Dam	N, O, A, W, F, S, S, S
27	Hatchet Creek	Norfolk Southern Railway	Junction of E. Fk Hatchet Creek and W. Fk Hatchet	O, A, W, F, S, S, S
28	East Fork Hatchet Creek	Hatchet Creek	Its source	O, A, W, F, S, S, S
29	West Fork Hatchet Creek	Hatchet Creek	Its source	O, A, W, F, S, S, S
30	Socapabay Creek	Hatchet Creek	Its source	F, G, W
31	Weogufka Creek	Hatchet Creek (Lake Mitchell)	Its source	S, F, G, W
32	Walnut Creek	COOSA RIVER (Lake Mitchell)	Its source	F, G, W
33	Waxahatchee Creek	COOSA RIVER (Lay Lake)	Its source	F, G, W
34	Tributary of Waxahatchee Creek	Waxahatchee Creek	Its source	F, G, W
35	Buxahatchee Creek	Waxahatchee Creek (Lay Lake)	Its source	F, G, W
36	Yellowleaf Creek	COOSA RIVER (Lay Lake)	Its source	F, G, W
37	Tallassee-hatchee Creek	COOSA RIVER (Lay Lake)	City of Sylacauga's water supply reservoir dam	F, G, W
38	Tallassee-hatchee Creek	City of Sylacauga's water supply reservoir dam	Its source	P, W, S, F, G, W
39	Shittes Creek	Tallassee-hatchee Creek	Its source	A, G, I
40	Talladega Creek	COOSA RIVER (Lay Lake)	County Road 303	F, G, W
41	Talladega Creek	County Road 303	Alabama Highway 77	P, W, S, F, G, W
42	Talladega Creek	Alabama Highway 77	Its source	F, G, W
43	Mump Creek	Talladega Creek	City of Talladega's water supply reservoir dam	F, G, W
44	Mump Creek	City of Talladega's water supply reservoir dam	Its source	P, W, S, F, G, W
45	Kelly Creek	COOSA RIVER (Lay Lake)	Its source	S, F, G, W
46	Wolf Creek	Kelly Creek	Its source	F, G, W
47	Choccolocco Creek	COOSA RIVER (Logan Martin Lake)	Its source	F, G, W
48	Eastaboga Creek	Choccolocco Creek	Its source	F, G, W
49	Cheaha Creek	Choccolocco Creek	Lake Chinnabee	S, F, G, W
50	Lake Chinnabee	Within Talladega National Forest	Its source	S, F, G, W
51	Kelly Creek	Cheaha Creek	Its source	F, G, W
52	Breon Branch	Kelly Creek	Its source	F, G, W
53	Coldwater Creek	Choccolocco Creek	Its source	F, G, W
54	Coldwater Spring	Choccolocco Creek	Its source	P, W, S, F, G, W
55	Snow Creek	Choccolocco Creek	Its source	F, G, W
56	Dye Creek	COOSA RIVER (Logan Martin Lake)	Its source	F, G, W
57	Cane Creek	COOSA RIVER (Logan Martin Lake)	Its source	F, G, W
58	Cave Creek	Cane Creek	Ft. McClellan Reservation	F, G, W
59	Shatohee Creek	COOSA RIVER (Logan Martin Lake)	Its source	S, F, G, W
60	Tallassee-hatchee Creek	Onathee Creek	Its source	F, G, W
61	Tributary of Tallassee-hatchee Creek	Tallassee-hatchee Creek	Its source	F, G, W
62	Big Canoe Creek	COOSA RIVER (Lake Henry)	Its source	F, G, W
63	Little Canoe Creek	Big Canoe Creek	Its source	F, G, W
64	Spring Creek	Little Canoe Creek	Its source	F, G, W
65	Big Will's Creek	COOSA RIVER (Lake Neely Henry- Lake Gadsden)	100 yds. below Allen Branch	F, G, W
66	Big Will's Creek	100 yds. below Allen Branch	Its source	P, W, S, F, G, W
67	Lake Gadsden (Lake Neely Henry)	U. S. Highway 411	Impoundment limits	F, G, W
68	Black Creek (Lake Gadsden)	Lake Neely Henry	Its source	A, G, I
69	Black Creek	U. S. Highway 431	Its source	F, G, W
70	Allen Branch	Big Will's Creek	Ft. Payne public water supply dam	F, G, W
71	Allen Branch	Ft. Payne public water supply dam	Its source	P, W, S, F, G, W
72	Coleman Lake	Within Talladega National Forest	Its source	S, F, G, W
73	Sweetwater Lake	Within Talladega National Forest	Its source	P, W, S, F, G, W
74	High Rock Lake	Within Talladega National Forest	Its source	F, G, W
75	Hillabee Lake	Within Talladega National Forest	Its source	P, W, S, F, G, W
76	Salt Creek Lake (reservoir never built)	Within Talladega National Forest	Its source	S, F, G, W
77	Shoal Creek	Choccolocco Creek	Sweetwater Lake	S, F, G, W
78	Ladiga Creek	Terrapin Creek	Its source	P, W, S



- Outstanding National Resource Water (ONRW) Designation
- Outstanding Alabama Water (OAW) Use Classification
- Public Water Supply (PWS) Use Classification
- Swimming (S) Use Classification
- Fish & Wildlife (F&W) Use Classification
- Agricultural & Industrial Water Supply (A&I) Use Classification
- Counties
- USDA-NRCS Subwatersheds-11 digits
- Reservoirs
- National Hydrography Dataset
- Cities and Towns
- USGS Cataloging Units-8 digits
- Annisson Army Depot & Ft. McClellan Military Reservation
- Talladega National Forest
- Cheaha Wilderness Area
- Little River Canyon National Preserve
- Nationwide Rivers Inventory (NRI) Waters
- Major Roads
- Primary road
- USGS 7.5 Minute Series Quadrangles (1:24,000)



Liability: Disclaimer
Neither the Alabama Department of Environmental Management or the State of Alabama nor any of the employees thereof, makes any warranty, express or implied, or assumes any liability or responsibility for the accuracy, completeness, or usefulness of any information contained on this map.

Software: ESRI's ArcView™ 3.2
Extension: RT's NHD-RT
Avenue Script: R. Burman's Project Save
Projection: Geographic/Projected
Datum: NAD83
Date: 12/07/2001
By: Mike Riefing@adem.state.al.us
ADEM Water Quality Branch

* According to USGS Hydrologic Unit Code boundaries these classifications are in the Alabama River Basin.
** Applicable dissolved oxygen level below existing impoundments is 40 mg/l.
*** The special designation of Outstanding National Resource Water applies to this segment.